



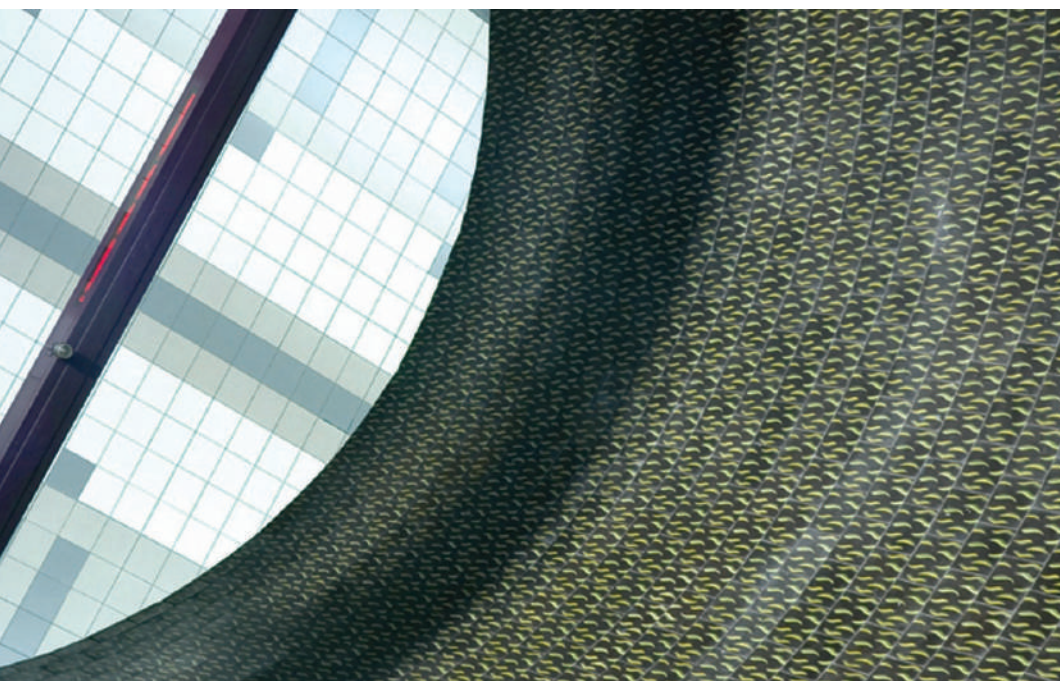
AGUAYO Tiles

MOSAICOS





AGUAYO*Tiles*



Espacios urbanos. Mosaicos "Aguayo Tiles" utilizados en las paredes del Metro de Puerto Rico.





LA EMPRESA

Industrias Aguayo de Construcción, fundada en 1948, es en la actualidad el más importante fabricante de mosaicos en la República Dominicana y el Caribe.

Somos una empresa familiar en tercera generación y también la mayor planta de producción, con capacidad instalada para producir diariamente más de 4,000 mosaicos hechos a mano.

Nuestros mosaicos han sido utilizados en la restauración de lugares de gran importancia histórica, como en el Viejo San Juan, en Puerto Rico, y en la Ciudad Colonial, en la República Dominicana.



THE COMPANY

Founded in 1948, Industrias Aguayo de Construcción is currently the premier manufacturer of cement tiles in the Dominican Republic and The Caribbean.

We are a third generation family business. Currently our production capacity is of more than 4,000 hand made tiles per day.

Our tiles have been utilized in the restoration of historically relevant sites, such as in Old San Juan in Puerto Rico, and the Colonial City in the Dominican Republic.



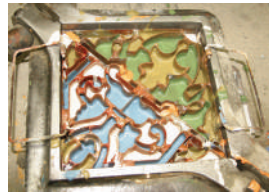
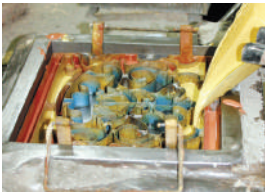


LOS MOSAICOS

Los mosaicos han existido desde finales del siglo XIX, pero su proceso de manufactura sigue a aquellos introducidos originalmente por los árabes hace más de 10 siglos.

Son fabricados a base de cemento, arena, polvo de mármol y pigmentos minerales, materiales que definen las extraordinarias cualidades de resistencia y brillo que le caracterizan. El mosaico de cemento es la solución pavimental que más posibilidades estéticas ofrece, pues la variedad de colores y diseños que pueden obtenerse son infinitos.

Cada pieza es hecha a mano por nuestros experimentados artesanos. La fabricación del mosaico es un arte que ha sido transmitido de generación en generación. Cada pieza que sale de nuestra fábrica lleva consigo no solamente el logo de nuestra empresa, sino también el orgullo de estos artesanos para quienes estos mosaicos representan no sólo un fruto de su trabajo, sino también la herencia que recibieron de sus padres. Por su naturaleza artesanal, la aparición de ligeras variaciones en tamaño, bordes y tonalidad, así como irregularidad de los bordes y la aparición de pequeñas líneas semejantes a grietas son inherentes a este tipo de producto, y son características que realzan el atractivo y vistosidad del mosaico, sin comprometer su calidad.



Estamos seguros de que usted encontrará en nuestra colección de mosaicos un diseño y un color que serán perfectos para añadir ese toque personal que usted desea en sus espacios.



THE TILES

Cement tiles have been around since the late 19th Century, but its manufacturing process follows those originally introduced by the Arabs in the Iberian Peninsula more than 10 centuries ago.

They are made from cement, sand, marble dust and mineral pigments. These materials define the extraordinary qualities of resistance and shine that are typical of this type of tile. The cement tile is the wall and floor covering solution that offers the widest range of options since the possibilities of combining colors and designs, or even creating your own designs, are truly endless.

Each individual tile is handmade by our skilled artisans. Cement tile making is a craft that has been passed on from generation to generation. Each piece that leaves our warehouse bears not only the logo of our company, but also the pride of these artisans for whom these tiles

represent not only the fruit of their labor, but also the legacy that they received from their elders. As these tiles are the work of artisans, slight imperfections, irregular edges and the appearance of fine crazing lines are inherent to this product. These characteristics add to the tile's natural appeal and do not compromise its performance.

We are certain that you will find in our collections a design and color that will be just perfect for adding a personal touch to your projects.





UN PRODUCTO “VERDE”

En la elaboración de nuestros mosaicos se combinan diversos elementos que lo convierten en un producto ideal para proyectos en los que la protección del medio ambiente es una prioridad:

El mosaico es fabricado completamente a mano y no es sometido a ningún tipo de tratamiento térmico, lo que implica que la cantidad de energía utilizada en nuestro proceso de fabricación es muy pequeña.

Al no requerirse calor evitamos también la contaminación al medio pues no se hace necesario quemar combustibles fósiles.

No utilizamos ningún químico que pueda ser nocivo al medio ambiente.

Al ser un producto de fabricación artesanal se hace necesaria la utilización de un amplio personal, lo que contribuye a que la riqueza creada por nuestro producto se distribuya entre un mayor número de familias.



A GREEN PRODUCT

In recent years, society has been developing a new ecological conscience—understanding the importance that using green products has on our quality of life. Aguayo Tiles appreciates this concern and uses energy and available natural resources inventively, in a way that does not negatively affect the environment and with the potential of positively impacting society.

Aguayo Tiles are ideal for projects in which the impact to the environment is a major concern:

Cement tiles are completely handmade and never have to be fired in a kiln, which means that the amount of energy used in our manufacturing process is very low.

Because no firing is required, no pollution creating fossil fuels are used in production of the tile.

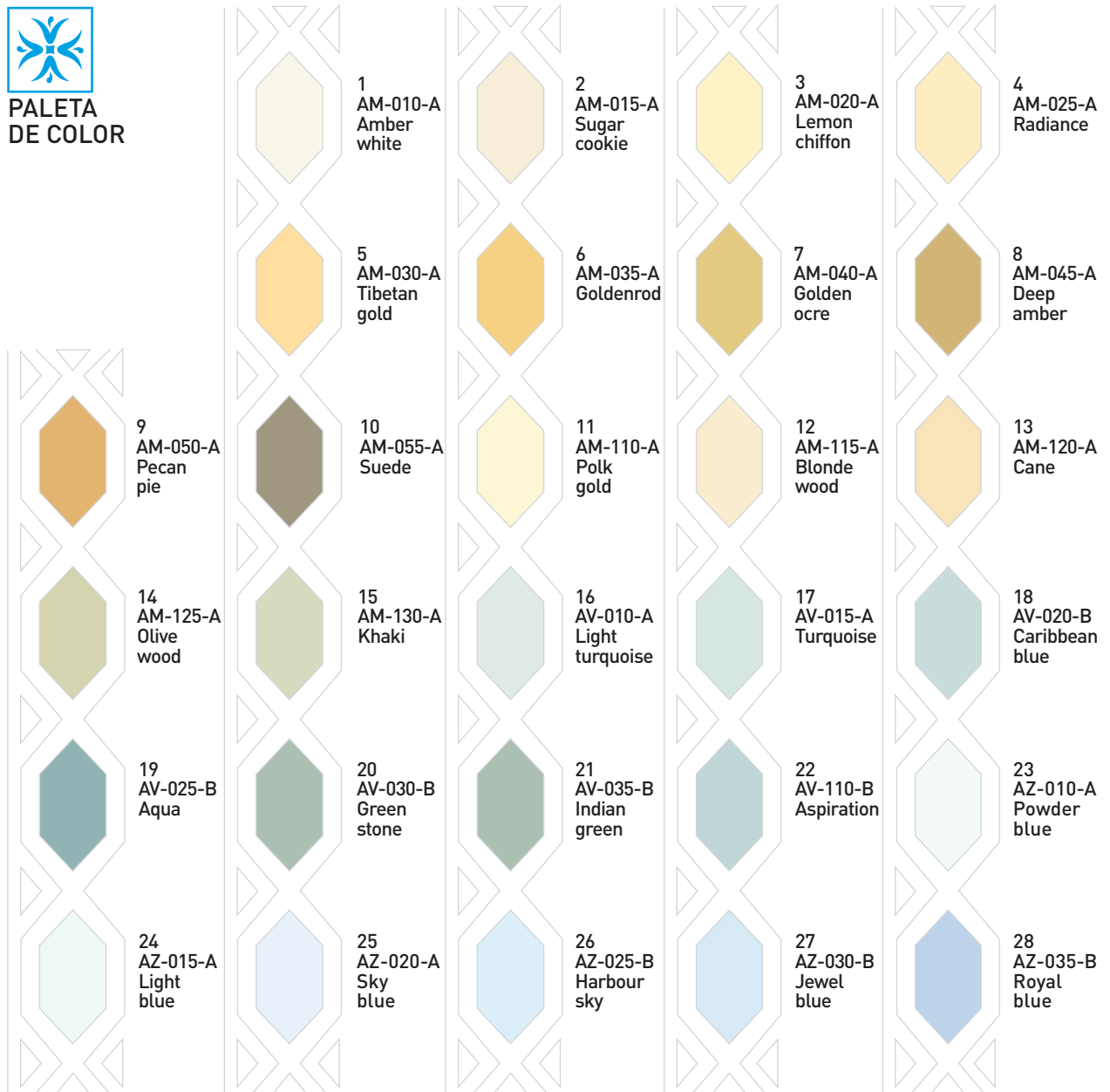
We do not use any harsh chemicals that might affect the environment.

Because the tile is hand made, a large labor force is required which means that the wealth generated by our product is distributed among a larger group of families.





PALETA DE COLOR





Note: Colors shown here may present variations due to the nature of printing. Please order samples before placing your order.



CATÁLOGO



DE MOSAICOS



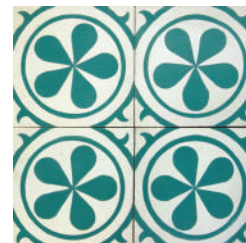
TRADICIONALES /
CLASSICS



1. ALCALÁ



2. AZUA



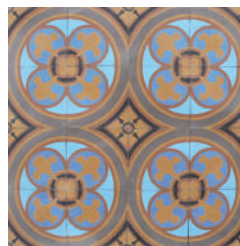
3. BÁVARO



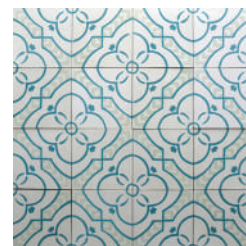
4. BAYAHIBE



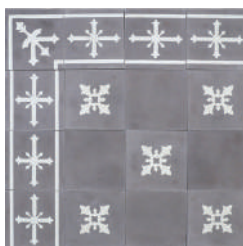
5. BONAÓ



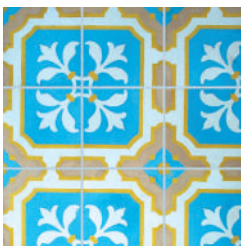
6. BRUSELAS



7. CABARETE



8. CÁDIZ



9. CATALINA



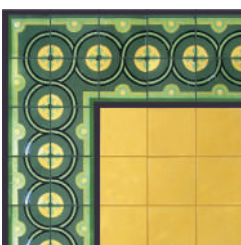
10. CATEDRAL



11. CIUDAD NUEVA
(25x25 cm)



12. CLAVEL



13. CONSTANZA



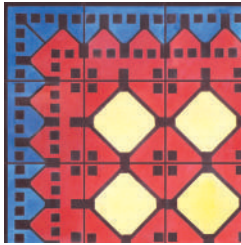
14. CÓRDOBA



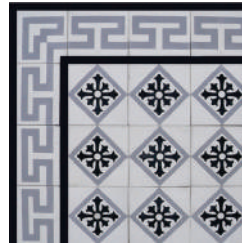
15. CRUZ SALADRIGAS



16. GRAN CÓRDOBA
(25x25 cm)



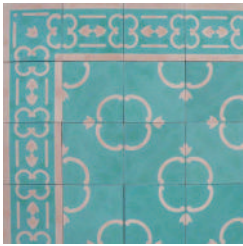
17. GRANADA



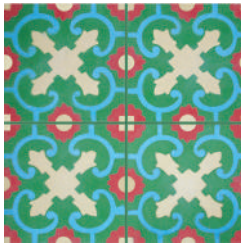
18. ISABELA



19. MACORÍS



20. MÁLAGA



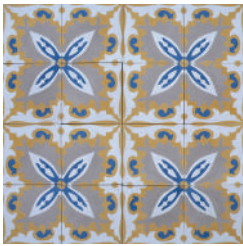
21. MANDALLA



22. MANZANILLO



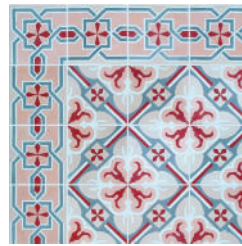
23. MARRAKECH
(25x25 cm)



24. MAYAGÜEZ



25. MELILLA



26. MONTECRISTI



27. MONTE PLATA



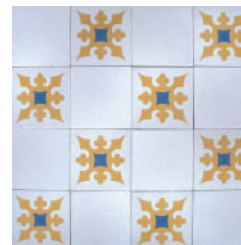
28. NEIBA



29. OCOA



30. PARAISO

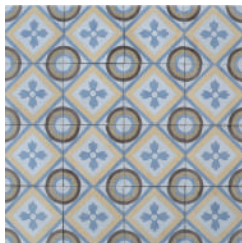


31. PONCE

Nota: Los mosaicos mostrados miden 20 x 20 centímetros a menos que se indique lo contrario.
Note: Tiles shown measure 20 x 20 centimeters unless otherwise noted.



32. PUERTO PLATA



33. ROMANA



34. SALINAS



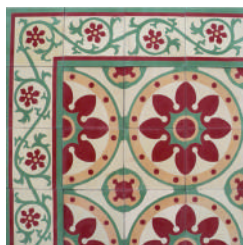
35. SAN CRISTÓBAL



36. SAN FRANCISCO



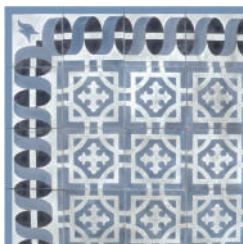
37. SAN JUAN



38. SANTA BÁRBARA



39. SANTIAGO



40. SANTO DOMINGO
(25x25 cm)



41. SEVILLA



42. SOSÚA



43. TOLEDO



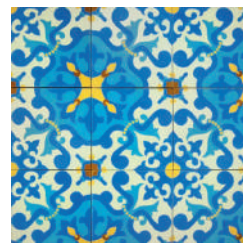
44. TOSCANA



45. TULIPÁN



46. YUNA



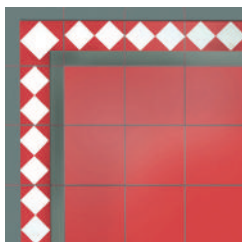
47. VALLEJUELO



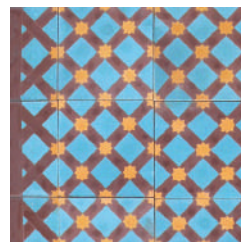
GEOMÉTRICOS /
GEOMETRICS



48. ANILLOS



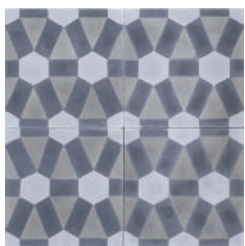
49. ARLEQUÍN



50. CASA BLANCA



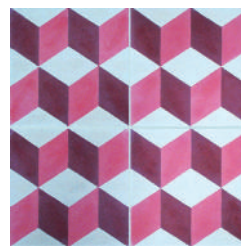
51. COLMENA



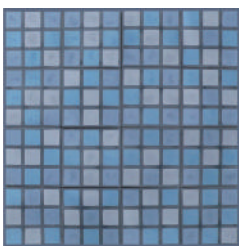
52. DIAMOND



53. GEO 1



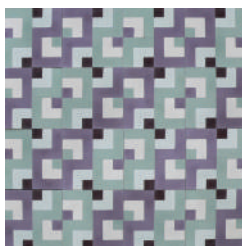
54. GEO 2



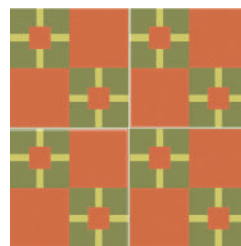
55. GEO 3



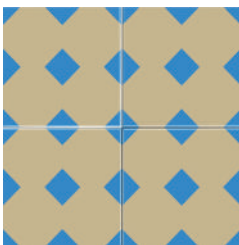
56. GEO 4



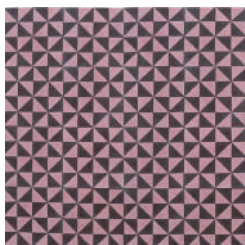
57. GEO 5



58. GEO 7



59. GEO 8
(20x20 cm / 25x25 cm)



60. GEO 9



61. GEO 10

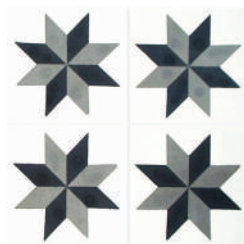


62. GEO 11

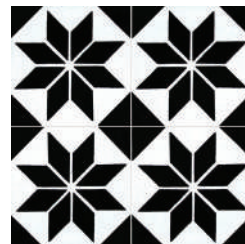
Nota: Los mosaicos mostrados miden 20 x 20 centímetros a menos que se indique lo contrario.
Note: Tiles shown measure 20 x 20 centimeters unless otherwise noted.



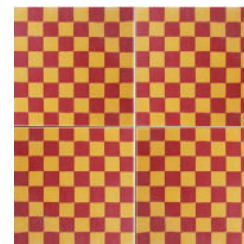
63. GEO 13



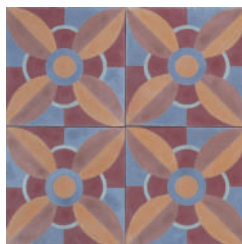
64. GEO 16



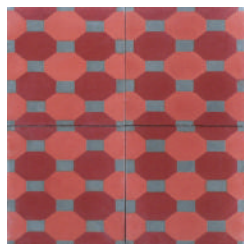
65. GEO 17



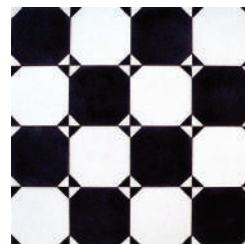
66. GEO 18



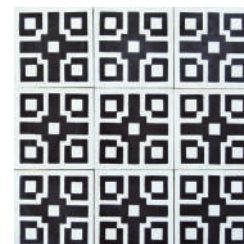
67. GEO 21



68. GEO 22



69. GEO 24



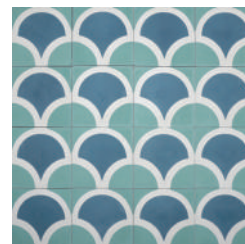
70. GEO 25



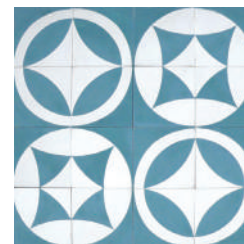
71. GEO 29



72. GEO 30



73. GEO 34



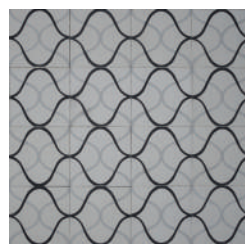
74. GEO 35



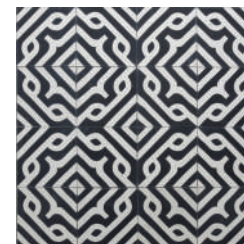
75. GEO 42
(25x25 cm)



76. GEO 44

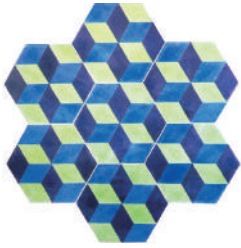


77. GEO 46
(25x25 cm)

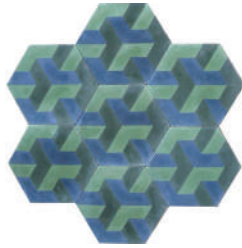


78. GEO 55

Nota: Los mosaicos mostrados miden 20 x 20 centímetros a menos que se indique lo contrario.
Note: Tiles shown measure 20 x 20 centimeters unless otherwise noted.



79. HEX 1



80. HEX 2



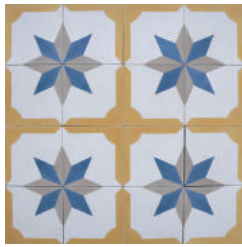
81. KICKAPOO



82. PEDERNALES
(25x25 cm)



83. SALCEDO



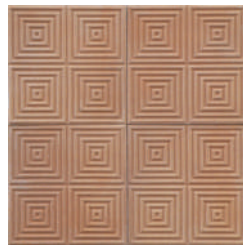
84. SANTURCE



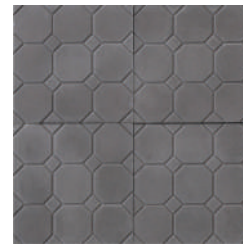
**TOCHOS /
TEXTURED**



CIRCULAR
(25x25 cm)



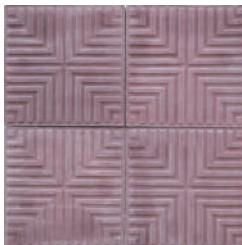
CONCÉNTRICO



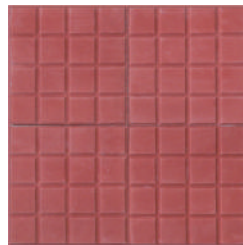
OCTAGONAL
(25x25 cm)



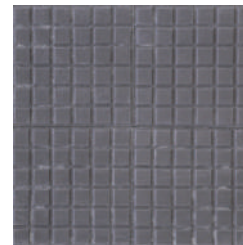
ONDAS
(25x25 cm)



SARGENTO



16 CUADROS



36 CUADROS

Nota: Los mosaicos mostrados miden 20 x 20 centímetros a menos que se indique lo contrario.
Note: Tiles shown measure 20 x 20 centimeters unless otherwise noted.



COLECCIONES ARTÍSTICAS

Cada año Industrias Aguayo presenta una nueva colección de mosaicos creada por renombrados artistas dominicanos con el fin de promover el uso del mosaico como pieza de arte funcional, y de promocionar el arte dominicano tanto a nivel nacional como internacional.

Estas colecciones son también el vehículo que utiliza la empresa para apoyar a distintas organizaciones sin fines de lucro que trabajan por el desarrollo del arte en el país y por el bienestar de comunidades necesitadas.



THE ARTIST COLLECTION

Periodically, Industrias Aguayo presents a new collection of tiles created by renowned artists from the Dominican Republic. This tile line is designed to showcase the artists work both nationally and internationally, and to promote the use of cement tile as functional art.

With these collections, the company supports multiple charities that promote art in the Dominican Republic and that work for the wellbeing of communities in need.

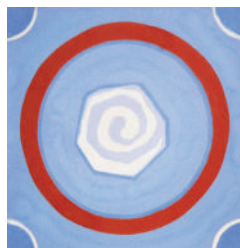




ARTISTAS /
ARTISTS



CÁNDIDO DOS PALOMAS
(25x25 cm)



CÁNDIDO ESPIRAL
(25x25 cm)



CÁNDIDO PECES
(25x25 cm)



ELSA CAYENA
(25x25 cm)



ELSA MARIPOSA
(25x25 cm)



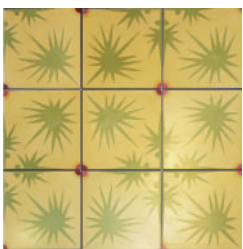
ELSA RAMILLETE



THIMO CAICALÍ



THIMO JUANILLO



THIMO MAYLES CANA



THIMO RILEY



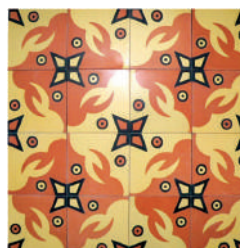
THIMO CANACÁN



JOERY SANTOS



ONASIS NÚÑEZ



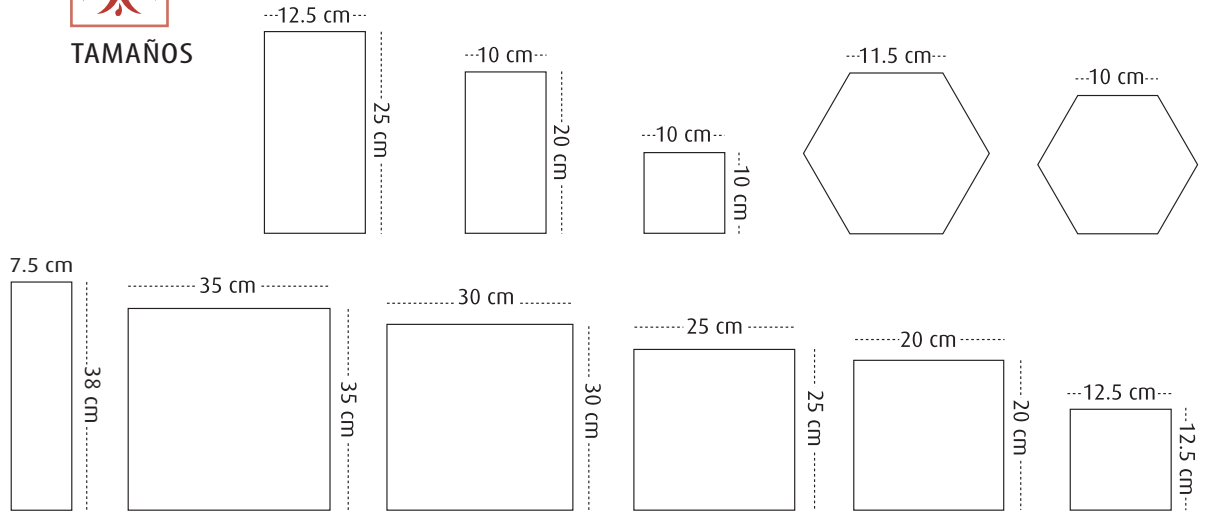
SANMRAY GIL

Nota: Los mosaicos mostrados miden 20 x 20 centímetros a menos que se indique lo contrario.
Note: Tiles shown measure 20 x 20 centimeters unless otherwise noted.

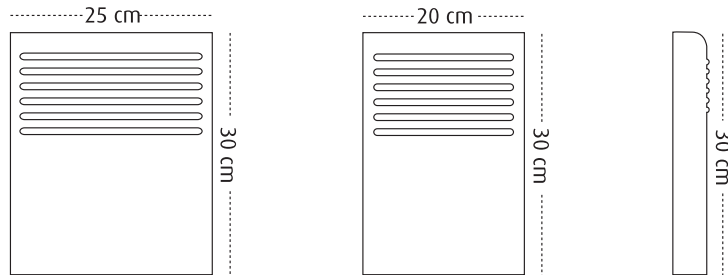


MOSAICOS / TILES

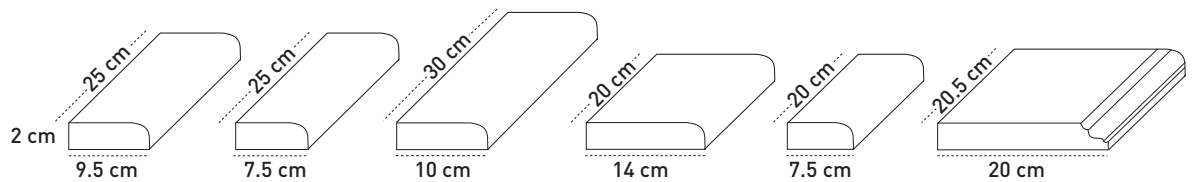
TAMAÑOS



ESCALONES / STEPS



ZOCALOS / BULLNOSES *



* Bocelos disponibles / Double bullnose also available.

